



RESINTECH PLASTICS (M) SDN. BHD.

Polyethylene Cold Water Tank

聚乙烯冷水槽

**Polyethylene (PE) Cold Water Storage Tank In Today's Market
Thus Making Drinking Water Safer And Healthier**

***BEST DESIGNED
FINEST QUALITY***



- SIRIM QAS CERTIFIED TO MS 1225 : 1991
- IKRAM APPROVED
- GUARANTEED 25 YEARS NATURAL WEAR
- GUARANTEED MAXIMUM CAPACITY
- GUARANTEED NO UNDERSIZED CAPACITY

"CLEAN DRINKING WATER IS THE MOST ESSENTIAL ELEMENT IN LIFE"



STANDARD TANK DIMENSION

SQUARE	MAXIMUM DIMENSION					
MODEL NO.	NOMINAL CAPACITY	MAXIMUM CAPACITY	MAXIMUM LENGTH	MAXIMUM WIDTH	EAVE HEIGHT	OVERALL HEIGHT
RESINTECH N50	230 litres (50G)	365 litres (80G)	39"	39"	23"	27"
RESINTECH N70	365 litres (80G)	455 litres (100G)	46"	46"	20"	25"
RESINTECH N100	455 litres (100G)	685 litres (150G)	52"	52"	23"	30"
RESINTECH N150	685 litres (150G)	910 litres (200G)	59"	58"	24"	31"
RESINTECH N200	910 litres (200G)	1135 litres (250G)	58"	58"	30"	38"
RESINTECH N250	1135 litres (250G)	1365 litres (300G)	59"	59"	38"	45"
RESINTECH N300	1365 litres (300G)	1820 litres (400G)	63"	63"	43"	50"
RESINTECH N400	1820 litres (400G)	2270 litres (500G)	65"	65"	54"	62"

ROUND	MAXIMUM DIMENSION				
MODEL NO.	NOMINAL CAPACITY	MAXIMUM CAPACITY	MAXIMUM DIAMETER(d)	EAVE HEIGHT(a)	OVERALL HEIGHT(b)
RESINTECH N50	230 litres (50G)	365 litres (80G)	45"	20"	24"
RESINTECH N70	365 litres (80G)	455 litres (100G)	48"	21"	25"
RESINTECH N100	455 litres (100G)	685 litres (150G)	52"	25"	31"
RESINTECH N150	685 litres (150G)	910 litres (200G)	62"	26"	33"
RESINTECH N200	910 litres (200G)	1135 litres (250G)	61"	33"	40"
RESINTECH N250	1135 litres (250G)	1365 litres (300G)	62"	38"	46"
RESINTECH N300	1365 litres (300G)	1820 litres (400G)	63"	52"	59"
RESINTECH N400	1820 litres (400G)	2270 litres (500G)	65"	61"	68"
RESINTECH N500	2270 litres (500G)	2730 litres (600G)	71"	59"	66"

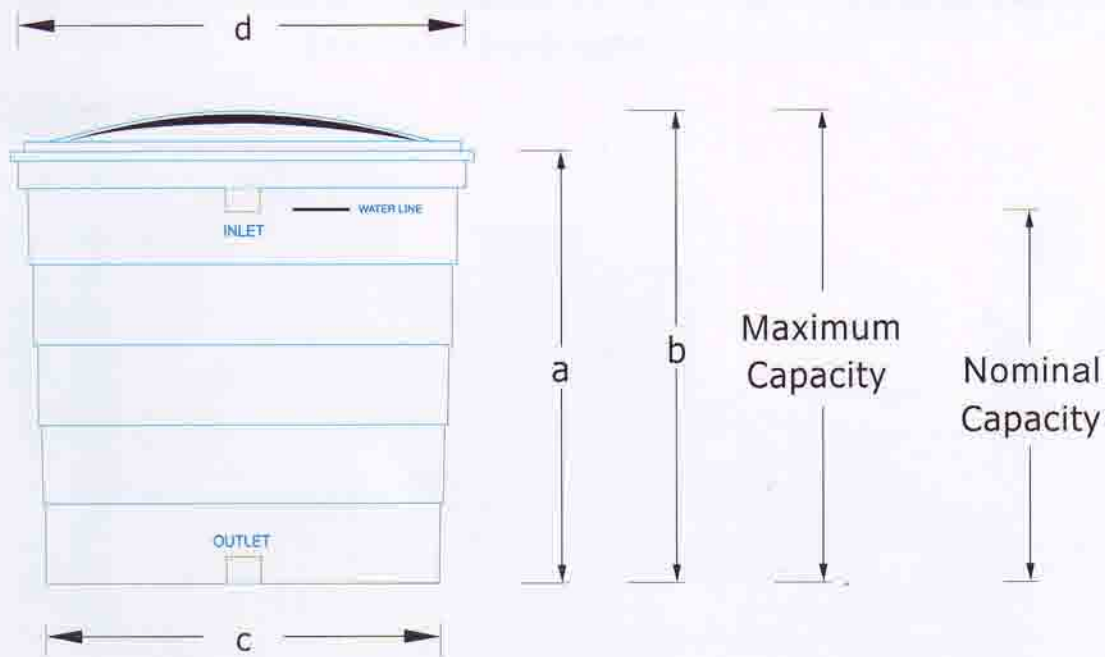
SPECIAL SIZE TANK DIMENSION

ROUND	MAXIMUM DIMENSION			ROUND	MAXIMUM DIMENSION		
MODEL NO.	TOP DIA. (d)	BASE DIA. (c)	HEIGHT (b)	MODEL NO.	TOP DIA. (d)	BASE DIA. (c)	HEIGHT (b)
N40-SR1	34"	26"	28"	N100-SR1	51"	39"	32"
N150-SR3	50"	37"	45"	N150-SR1	51"	39"	41"
N150-SR4	47"	37"	48"	N200-SR1	51"	39"	47"
N250-SR3	60"	50"	35"	N150-SR2	48"	38"	40"
N250-SR4	53"	40"	53"	N200-SR2	48"	38"	46"
N250-SR5	48"	40"	58"	N250-SR1	48"	38"	53"
N300-SR1	61"	46"	54"	N200-SR3	50"	40"	52"
				N250-SR2	61"	51"	40"

• For special size tank, please refer to manufacturer for availability.

SPECIAL SIZE TANK DIMENSION

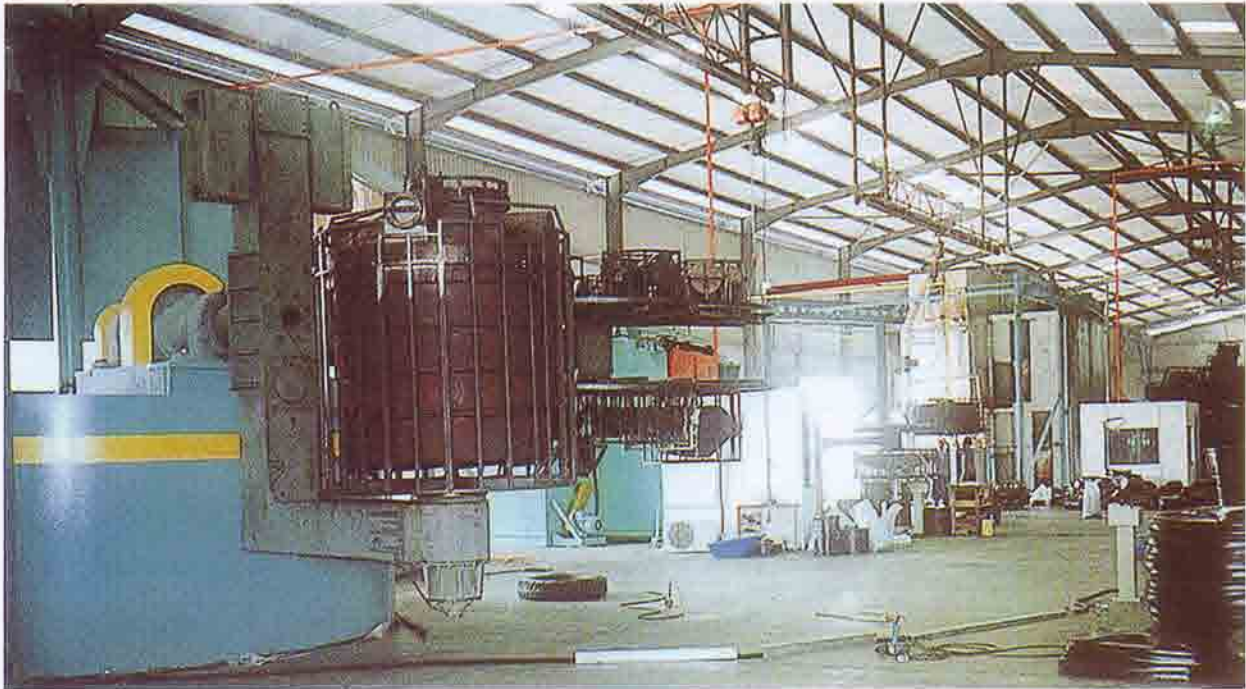
SQUARE	MAXIMUM DIMENSION			
MODEL NO.	MAXIMUM LENGTH	MAXIMUM WIDTH	EAVE HEIGHT	OVERALL HEIGHT
N20-SS1	31"	21"	16"	19"
N40-SS1	44"	34"	17"	20"
N70-SS1	45"	33"	24"	25"
N70-SS2	48"	48"	14"	15"
N70-SS3	48"	48"	16"	17"
N70-SS4	56"	30"	15"	16"
N70-SS5	50½"	30½"	18"	19½"
N100-SS1	53"	42½"	21"	23"
N200-SS1	85"	43"	18"	18½"
N250-SS1	58"	48"	32"	33"
N400-SS1	76"	58"	28"	28"



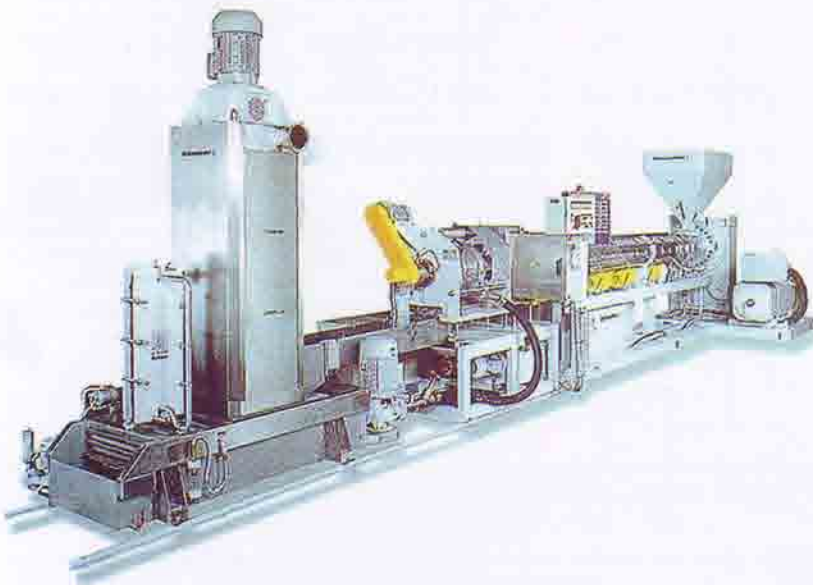
INSTALLATION INSTRUCTIONS

- (1) The centerline of the float operated valve shall be a minimum of 38mm from the top of the cistern.
- (2) The base shall be adequately and uniformly supported over its whole area.
- (3) Pipes shall be supported and aligned so as not to distort the cistern, and back nuts shall not be over-tightened.
- (4) No putty or joining compound shall be used. Plastics washer shall be used.
- (5) Circular holes for fixing pipes shall have a clean edge, free from notches. Cut with hole saw cutter. Scratching or scoring the cistern shall not be used for setting out the holes.
- (6) Suitably protected support washers shall be provided internally and externally for all pipe connections.
- (7) The cistern must not in close proximity to heaters, electric light bulbs or other sources heat.

RESINTECH USES THE MOST ADVANCED TECHNOLOGY IN ROTATIONAL MOULDING, THUS ASSURING ITS CUSTOMER THE HIGHEST QUALITY STANDARD.



ROTATIONAL MOULDING MACHINES



PULVERIZING AND PELLETIZING MACHINES

CONFORMING TO SECTION 3.2, MS 1225 : 1991 AS SPECIFIED BY SIRIM FOR POLYTHYLENE MATERIALS.

HOUSING THE MOST MODERN PLANT WITH STATE-OF-THE ART FACILITIES TOWARDS ACHIEVING ISO 9001 : 2000



Resintech Plastics (M) Sdn Bhd

Lot 3 & 5, Jalan Waja 14
Kaw. Perindustrian Telok Panglima Garang
42500 Telok Panglima Garang
Selangor Darul Ehsan, Malaysia.
Tel: 03-3122 2422 / 8 Fax: 03-3122 2411
E-mail: resinteh@tm.net.my ; resinteh@streamyx.com
Website: www.resintechmalaysia.com

Oct 2006